

[RECEPTACLES]

NGV1 Profile Receptacles

Parker FM Series receptacle are designed for rigid mounting on a compressed natural gas vehicle. Receptacle can be employed in both fast-fill and time-fill dispensing application. The NGV1/ANSI standard used by FM Series receptacles, allows vehicle fueling to be accomplished with all CNG nozzles, conforming to the NGV1/ANSI standard.



Features

- FM Series receptacles can be used with all versions of Parker FM Series nozzles
- FM Series receptacles meet all dimensional and performance requirements of the NGV1/ANSI standard
- Receptacle employ a differential pressure-actuated valve
- Internal check valve provides unidirectional flow-natural gas will only flow from dispenser to vehicle
- Brass or Stainless steel Body construction available
- Ozone resist and rubber dust cap available
- Extensive end configurations and mounting methods available
- Internal components are 316 Stainless Steel
- Seal is comprised of a special Nitrile compound formulated for compressed natural gas service

Materials of construction

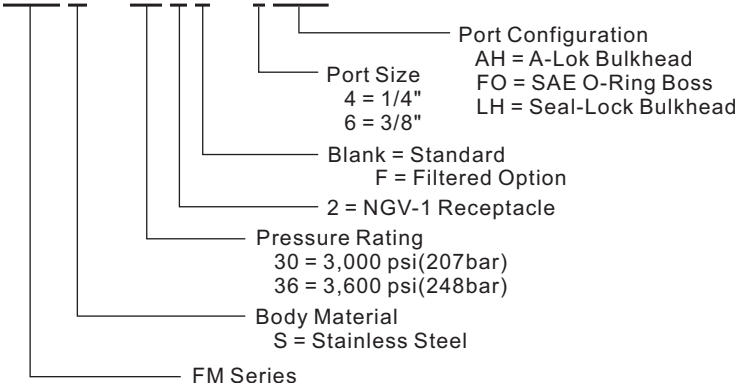
- Body : 316 Stainless Steel
- Adapter : 316 Stainless Steel
- Valving : 316 Stainless Steel
- Seal : Special CNG Nitrile Compound
- Dust Cap : Low temperature Nitrile Compound

Specification

- Pressure : 3,000 or 3,600 psi (207 or 248bar) connected & disconnected
- Temperature : -40°F to +250°F(-40°C to +121°C)
- Rated Flow : 1,500 scfm
- Seal : Special CNG Nitrile Compound
- Dust Cap : Low temperature Nitrile Compound

Receptacle Part Number

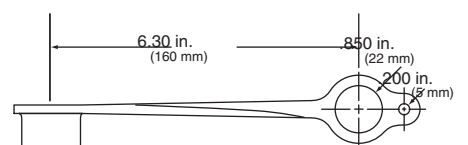
FMS - 302F - 6FO



Dust Caps

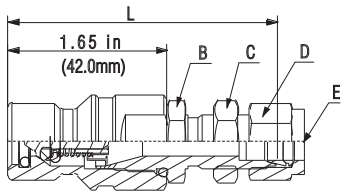
Parker Dust Caps are recommended to protect receptacle from environmental contaminants. Rubber compound has good resistance to oil, abrasion, ozone.

FM Series Receptacle Dust Cap	
Dust Cap Part No.	Material
FM-66M	Nitrile



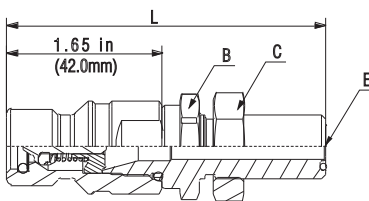
[RECEPTACLES]

NGV1 Profile Receptacles



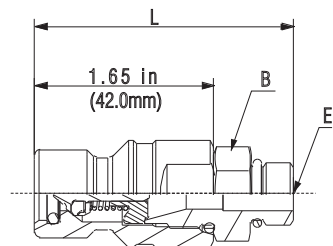
FMS-3*2-*AH

Part No.	L		B Hex		C Lok-Nut Hex		D Nut Hex		E End Parts
	Inch	mm	Inch	mm	Inch	mm	Inch	mm	
FMS-302-4AH FMS-362-4AH	2.71	68.8	0.75	19.0	0.75	19.0	0.56	14.3	1/4 A-Lok Bulkhead
FMS-302-6AH FMS-362-6AH	2.78	70.6	0.75	19.0	0.75	19.0	0.69	17.5	3/8 A-Lok Bulkhead
FMS-302-8AH FMS-362-8AH	3.09	78.4	1.00	25.4	1.06	27.0	0.88	22.2	1/2 A-Lok Bulkhead
FMS-302-M6AH FMS-362-M6AH	2.98	75.6	0.81	20.6	0.75	19.0	0.55	14.0	6mm A-Lok Bulkhead
FMS-302-M8AH FMS-362-M8AH	2.76	70.1	0.75	19.0	0.75	19.0	0.63	16.0	8mm A-Lok Bulkhead
FMS-302-M10AH FMS-362-M10AH	3.09	78.4	1.00	25.4	1.06	27.0	0.75	19.0	10mm A-Lok Bulkhead
FMS-302-M12AH FMS-362-M12AH	3.09	78.4	1.00	25.4	1.06	27.0	0.87	22.1	12mm A-Lok Bulkhead



FMS-3*2-*LH

Part No.	L		B Hex		C Lok-Nut Hex		D Nut Hex		E End Parts
	Inch	mm	Inch	mm	Inch	mm	Inch	mm	
FMS-302-4LH FMS-362-4LH	3.03	77.0	0.81	20.6	0.81	20.6	-	-	1/4 Seal-Lok Bulkhead
FMS-302-6LH FMS-362-6LH	3.38	85.9	1.00	25.4	1.00	25.4	-	-	3/8 Seal-Lok Bulkhead



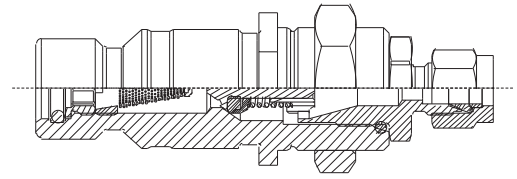
FMS-3*2-6MO

Part No.	L		B Hex		C Lok-Nut Hex		D Nut Hex		E End Parts
	Inch	mm	Inch	mm	Inch	mm	Inch	mm	
FMS-302-6MO FMS-352-6MO	2.39	60.7	0.75	19.0	-	-	-	-	3/8 O-Ring Port

[RECEPTACLES]

NGV1 Profile Filtered Receptacles

Parker FM Series Receptacle are designed for rigid mounting on a compressed natural gas vehicle. Receptacle can be employed in both fast-fill and time-fill dispensing applications. The filter elements eliminates contaminants from the environment and unclean compressed natural gas sources. It serves both as a prefilter to on-board vehicle components and as a protection to the FM receptacle valving and seals. The NGV1 profile utilized by Filtered FM Receptacle allows.



Features

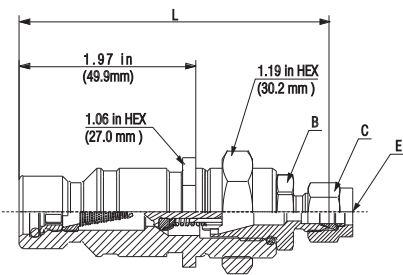
- Filter elements provides for protection to the FM receptacle valving and seals from external contaminants that can be introduced during fueling
- Filter element is field replaceable and can be simply cleaned by flushing with a reverse flow
- Filter can prevent expensive repairs, prolong useful life of down stream CNG components and reduce downtime for end users
- FM Series Filtered Receptacle are NGV1 certified
- Available with a 400 or 200 micron filter element

Material of Construction

- Body : 316 Stainless Steel
- Adapter : 316 Stainless Steel
- Valving : 316 Stainless Steel
- Seal : Special CNG Nitrile Compound
- Dust Cap : Low temperature Nitrile Compound

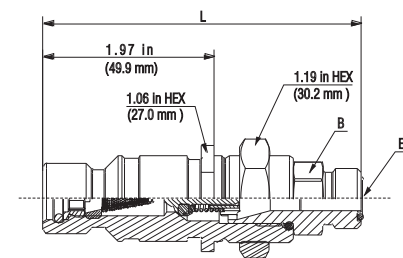
Specification

- Pressure : 3,000 or 3,600 psi (connected & disconnected)
- Temperature : -40°F to +250°F (-40°C to +121°C)
- Seal : Special CNG Nitrile Compound
- Dust Cap : Low temperature Nitrile Compound



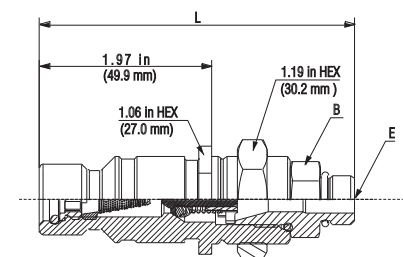
FMS-3*2F-*AH

Part No.	L		B Hex		C Lok-Nut Hex		E End Parts
	Inch	mm	Inch	mm	Inch	mm	
FMS-302F-4AH FMS-362F-4AH	3.47	88.1	0.75	19.0	0.56	14.3	1/4 A-Lok Bulkhead
FMS-302F-6AH FMS-362F-6AH	3.53	89.7	0.75	19.0	0.69	17.5	3/8 A-Lok Bulkhead
FMS-302F-8AH FMS-362F-8AH	3.73	94.5	1.00	25.4	0.88	22.2	1/2 A-Lok Bulkhead
FMS-302F-M8AH FMS-362F-M8AH	3.50	88.8	0.75	19.0	0.63	16.0	8mm A-Lok Bulkhead



FMS-3*2F-*LH

Part No.	L		B Hex		C Lok-Nut Hex		E End Parts
	Inch	mm	Inch	mm	Inch	mm	
FMS-302F-4LH FMS-362F-4LH	3.56	90.4	0.75	19.0	-	-	1/4 Seal-Lok Bulkhead
FMS-302F-6LH FMS-362F-6LH	3.67	93.2	0.75	19.0	-	-	3/8 Seal-Lok Bulkhead



FMS-3*2F-6MO

Part No.	L		B Hex		C Lok-Nut Hex		E End Parts
	Inch	mm	Inch	mm	Inch	mm	
FMS-302F-6MO FMS-362F-6MO	3.60	91.5	0.75	19.0	-	-	3/8 O-Ring Port